



National Institute for Earth Physics - Magurele

Seismic report - manual

Event local time: Wed May 26,2021 00:30:37

Romania - Event 25213037 - Vrancea seismic zone

Tue May 25, 2021 21:30:37 GMT ML 4.7 N45.52 E26.52 Depth: 128.2km ID:25213037

NOTE: Accelerations, velocities and intensities are calculated automatically and are not revised by human operator. Their accuracy has not been evaluated.

Seismicity of Romania - latest large intermediate earthquakes

Date	Time	Lon	Lat	Depth	Mw
28-Oct-2018	00:38:11	26.41	45.61	147.8	5.5
27-Dec-2016	23:20:55	26.60	45.71	96.9	5.6
23-Sep-2016	23:11:20	26.62	45.71	92.0	5.5
06-Oct-2013	01:37:21	26.58	45.67	135.1	5.2
25-Apr-2009	17:18:48	26.62	45.68	109.6	5.4
18-Jun-2005	15:16:41	26.66	45.72	153.7	5.2
14-May-2005	01:53:21	26.53	45.64	148.5	5.5
27-Oct-2004	20:34:36	26.63	45.84	105.4	6.0
06-Apr-2000	00:10:38	26.64	45.75	143.4	5.0
28-Apr-1999	08:47:56	26.27	45.49	151.1	5.3

Source: ROMPLUS Catalogue

Romania – Event 25213037 – Vrancea seismic zone

Attenuation laws – GMPE::VS10 IPE::VS04_msk

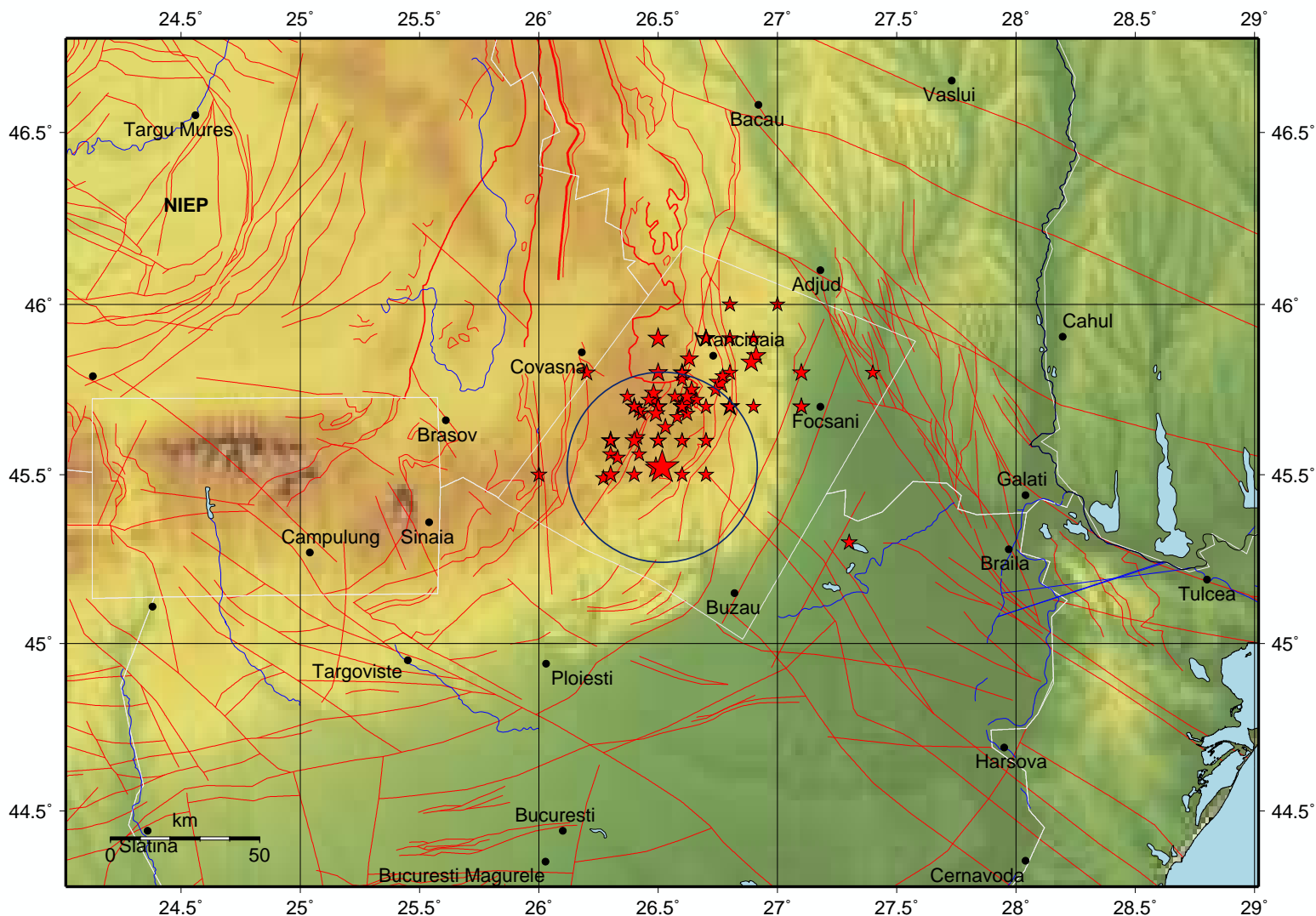
Max. grid values – pga: 7.16(cm/sec**) pgv: 0.10(cm/sec) mi: 3.4

Tue May 25, 2021 21:30:37 GMT ML 4.7 N45.52 E26.52 Depth: 128.2km ID:25213037 **Mw 4.2**

Local time

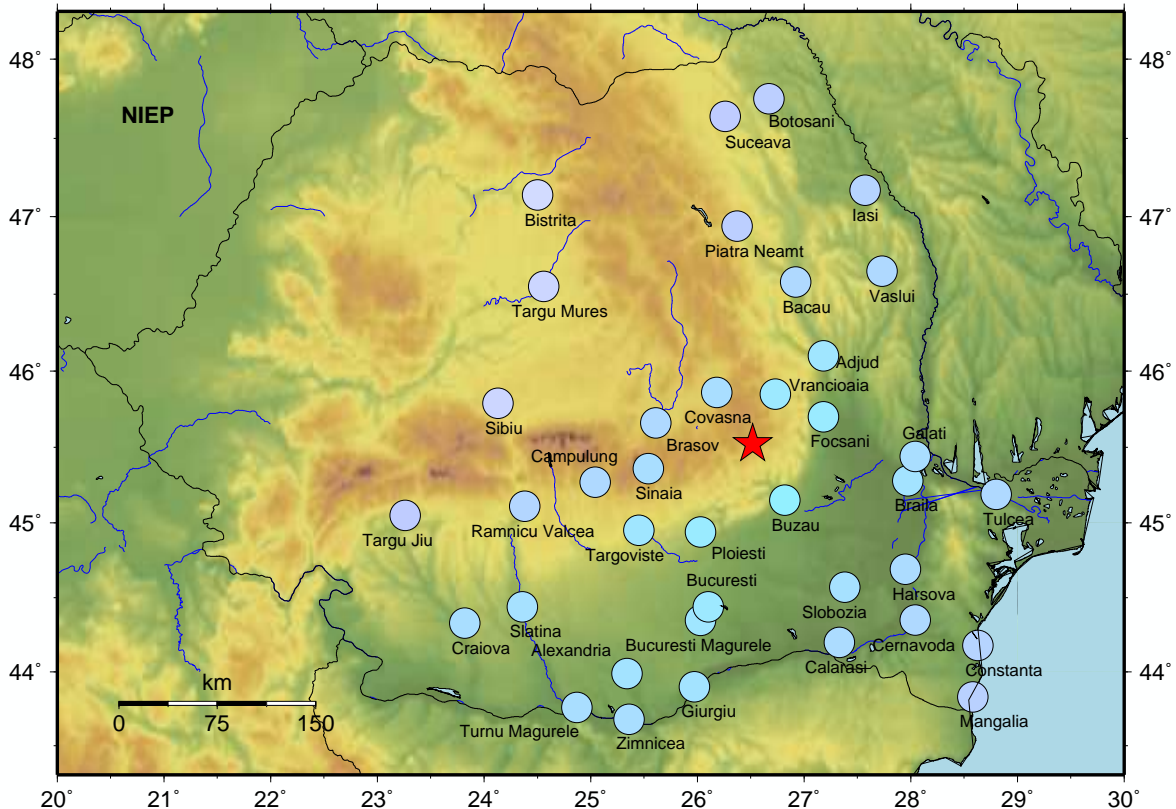
Wed May 26, 2021 00:30:37

Fault lines



Estimated intensities based on IPE::VS04_msk attenuation law

Tue May 25, 2021 21:30:37 GMT ML 4.7 N45.52 E26.52 Depth: 128.2km ID:25213037



City	Distance(km)
Vrancioaia	40
Covasna	45
Buzau	47
Focsani	55
Brasov	72
Ploiesti	75
Sinaia	78
Adjud	82
Targoviste	105
Braila	116
Campulung	118
Galati	119
Bacau	121
Bucuresti	124
Slobozia	125
Bucuresti Magurele	136
Harsova	145
Vaslui	156
Piatra Neamt	158
Calarasi	160
Ramnicu Valcea	173
Cernavoda	177
Tulcea	182
Giurgiu	185
Sibiu	188
Targu Mures	189
Alexandria	194
Iasi	200
Slatina	208
Constanta	223
Zimnicea	224
Turnu Magurele	235
Suceava	236
Bistrita	237
Botosani	247
Mangalia	249
Craiova	250
Targu Jiu	260

PERCEIVED SHAKING	Not felt	Weak	Light	Moderate	Strong	Very strong	Severe	Violent	Extreme
POTENTIAL DAMAGE	none	none	none	Very light	Light	Moderate	Moderate/Heavy	Heavy	Very Heavy
INSTRUMENTAL INTENSITY	I	II-III	IV	V	VI	VII	VIII	IX	X+

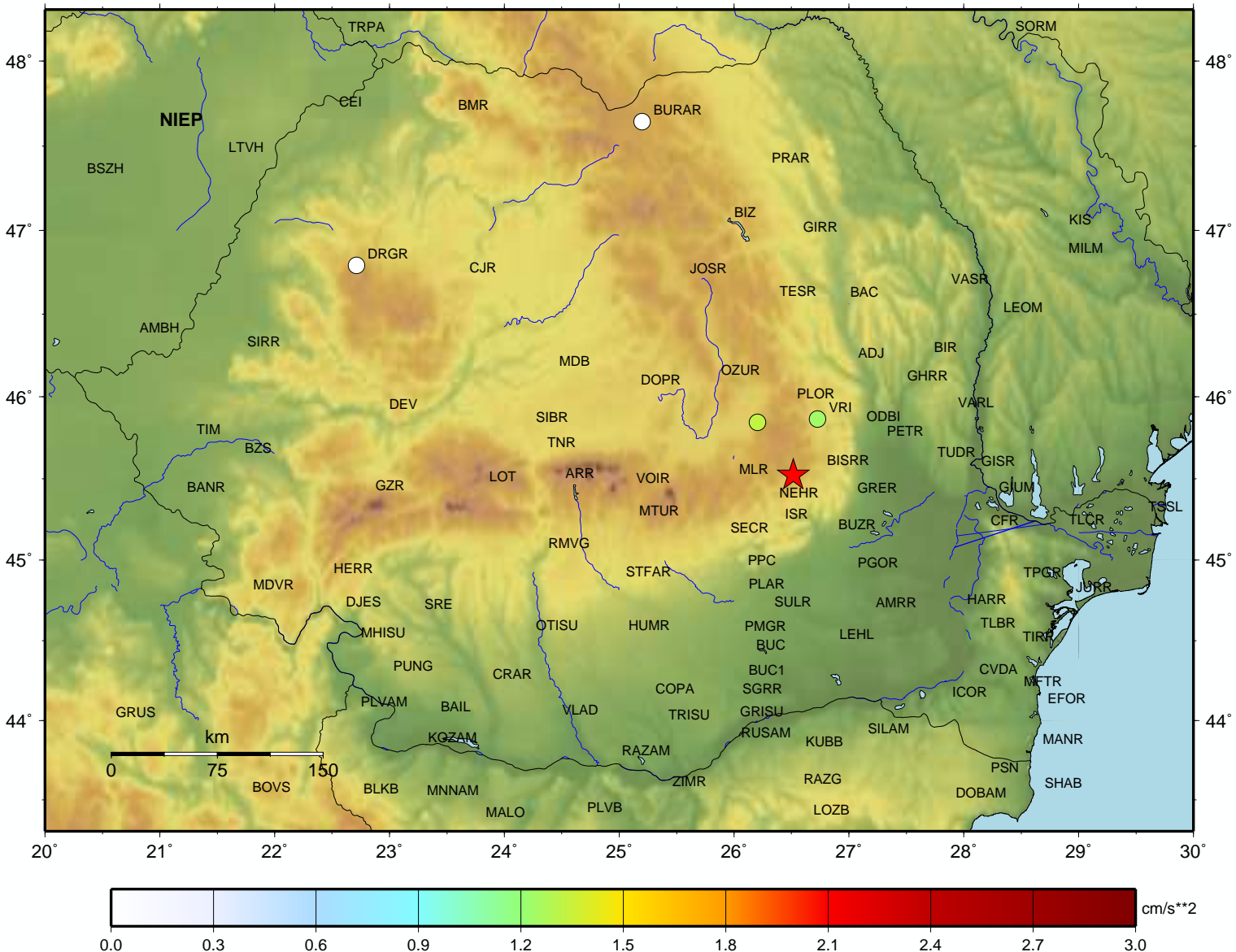
The largest accelerations recorded automatically by the seismic stations of "Instalatie de Interes National - Retea Seismica Nationala (IOSIN-RSN)"

Max. pga (cm/sec**2)		
COVR	HNE	1.32
VRI	HNE	1.24
BURAR	BHN	0.01
DRGR	HNE	0.01

Observed stations accelerations – Antelope platform (cm/sec**2)

Maximum observed acceleration: COVR_HNE -1.32

Tue May 25, 2021 21:30:37 GMT ML 4.7 N45.52 E26.52 Depth: 128.2km ID:25213037



Observed stations velocities – Antelope platform (cm/sec)

Maximum observed velocity: VLDR_HHN 0.29

Tue May 25, 2021 21:30:37 GMT ML 4.7 N45.52 E26.52 Depth: 128.2km ID:25213037

