



National Institute for Earth Physics - Magurele

## Seismic report - manual

Event local time: Sat Jul 17,2021 20:15:40

Romania - Event 17171540 - Vrancea seismic zone

Sat Jul 17, 2021 17:15:40 GMT ML 3.6 N45.64 E26.47 Depth: 145.4km ID:17171540

NOTE: Accelerations, velocities and intensities are calculated automatically and are not revised by human operator. Their accuracy has not been evaluated.

# Seismicity of Romania - latest large intermediate earthquakes

Date	Time	Lon	Lat	Depth	Mw
28-Oct-2018	00:38:11	26.41	45.61	147.8	5.5
27-Dec-2016	23:20:55	26.60	45.71	96.9	5.6
23-Sep-2016	23:11:20	26.62	45.71	92.0	5.5
06-Oct-2013	01:37:21	26.58	45.67	135.1	5.2
25-Apr-2009	17:18:48	26.62	45.68	109.6	5.4
18-Jun-2005	15:16:41	26.66	45.72	153.7	5.2
14-May-2005	01:53:21	26.53	45.64	148.5	5.5
27-Oct-2004	20:34:36	26.63	45.84	105.4	6.0
06-Apr-2000	00:10:38	26.64	45.75	143.4	5.0
28-Apr-1999	08:47:56	26.27	45.49	151.1	5.3

Source: ROMPLUS Catalogue

## Romania – Event 17171540 – Vrancea seismic zone

Attenuation laws – GMPE::VS10 IPE::VS04\_msk

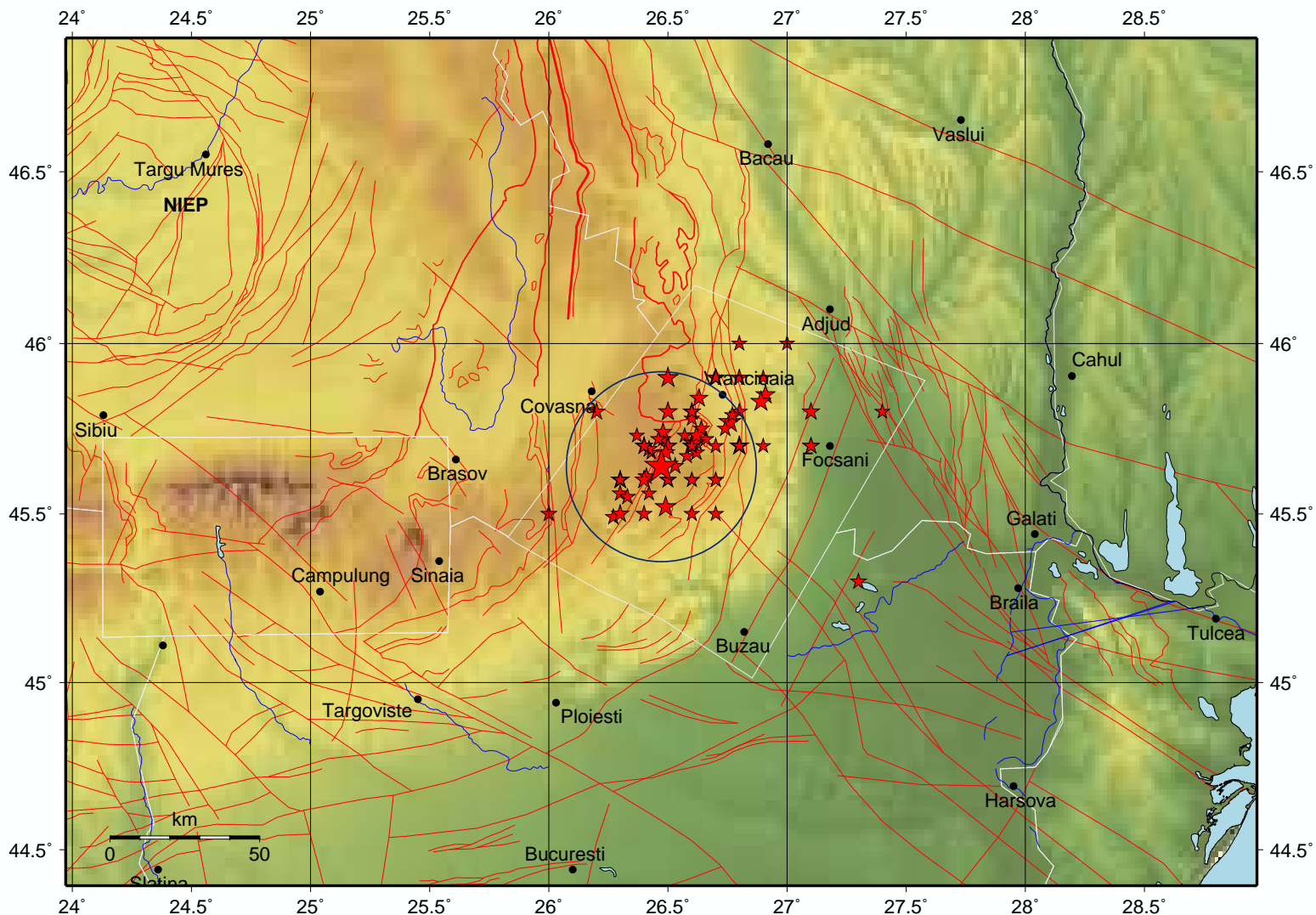
Max. grid values – pga: 0.69(cm/sec\*\*) pgv: 0.00(cm/sec) mi: 2.0

Sat Jul 17, 2021 17:15:40 GMT ML 3.6 N45.64 E26.47 Depth: 145.4km ID:17171540 **Mw 3.4**

Local time

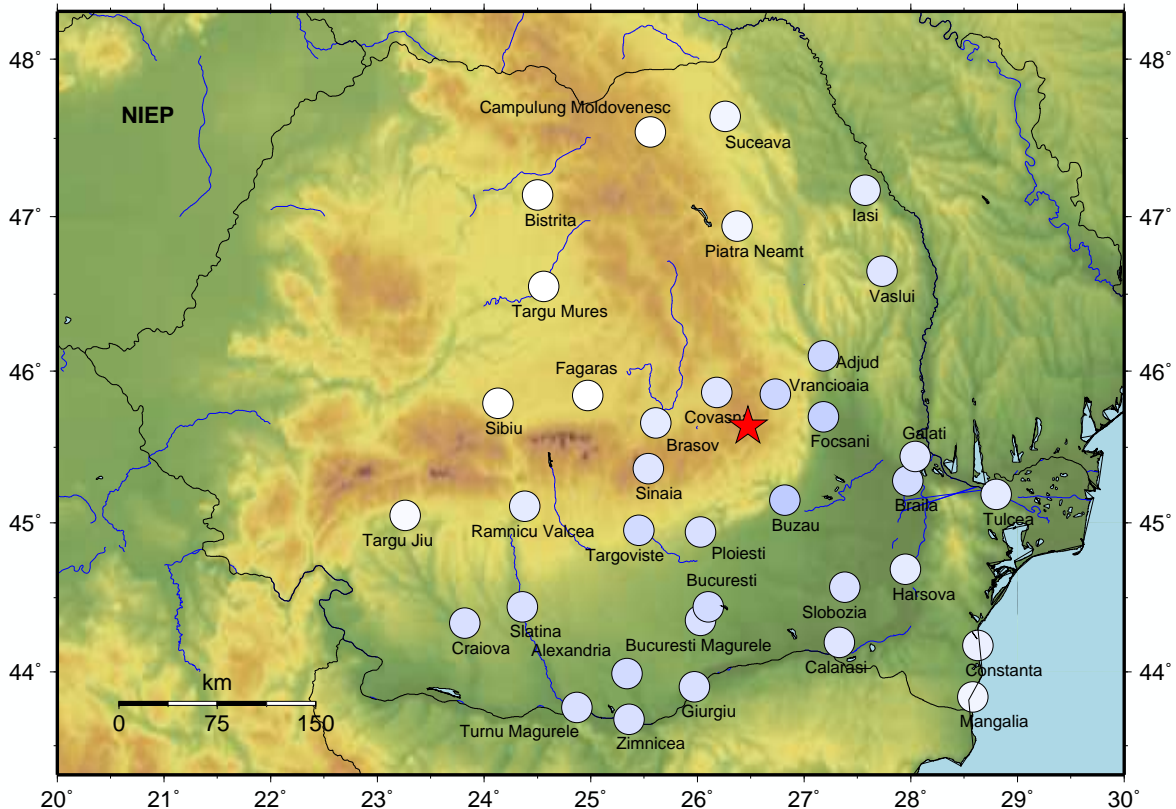
Sat Jul 17, 2021 20:15:40

Fault lines ———



### Estimated intensities based on IPE::VS04\_msk attenuation law

Sat Jul 17, 2021 17:15:40 GMT ML 3.6 N45.64 E26.47 Depth: 145.4km ID:17171540



City	Distance(km)
Vrancea	30
Covasna	33
Focsani	55
Buzau	60
Brasov	67
Adjud	75
Sinaia	79
Ploiesti	85
Targoviste	110
Fagaras	119
Braila	123
Galati	124
Bucuresti	136
Slobozia	138
Piatra Neamt	144
Bucuresti Magurele	147
Vaslui	148
Harsova	156
Calarasi	173
Ramnicu Valcea	174
Targu Mures	179
Sibiu	183
Tulcea	188
Iasi	189
Giurgiu	197
Alexandria	203
Slatina	213
Campulung M.	222
Suceava	223
Bistrita	225
Zimnicea	234
Constanta	235
Turnu Magurele	244
Craiova	254
Targu Jiu	260
Mangalia	261

PERCEIVED SHAKING	Not felt	Weak	Light	Moderate	Strong	Very strong	Severe	Violent	Extreme
POTENTIAL DAMAGE	none	none	none	Very light	Light	Moderate	Moderate/Heavy	Heavy	Very Heavy
INSTRUMENTAL INTENSITY	I	II-III	IV	V	VI	VII	VIII	IX	X+

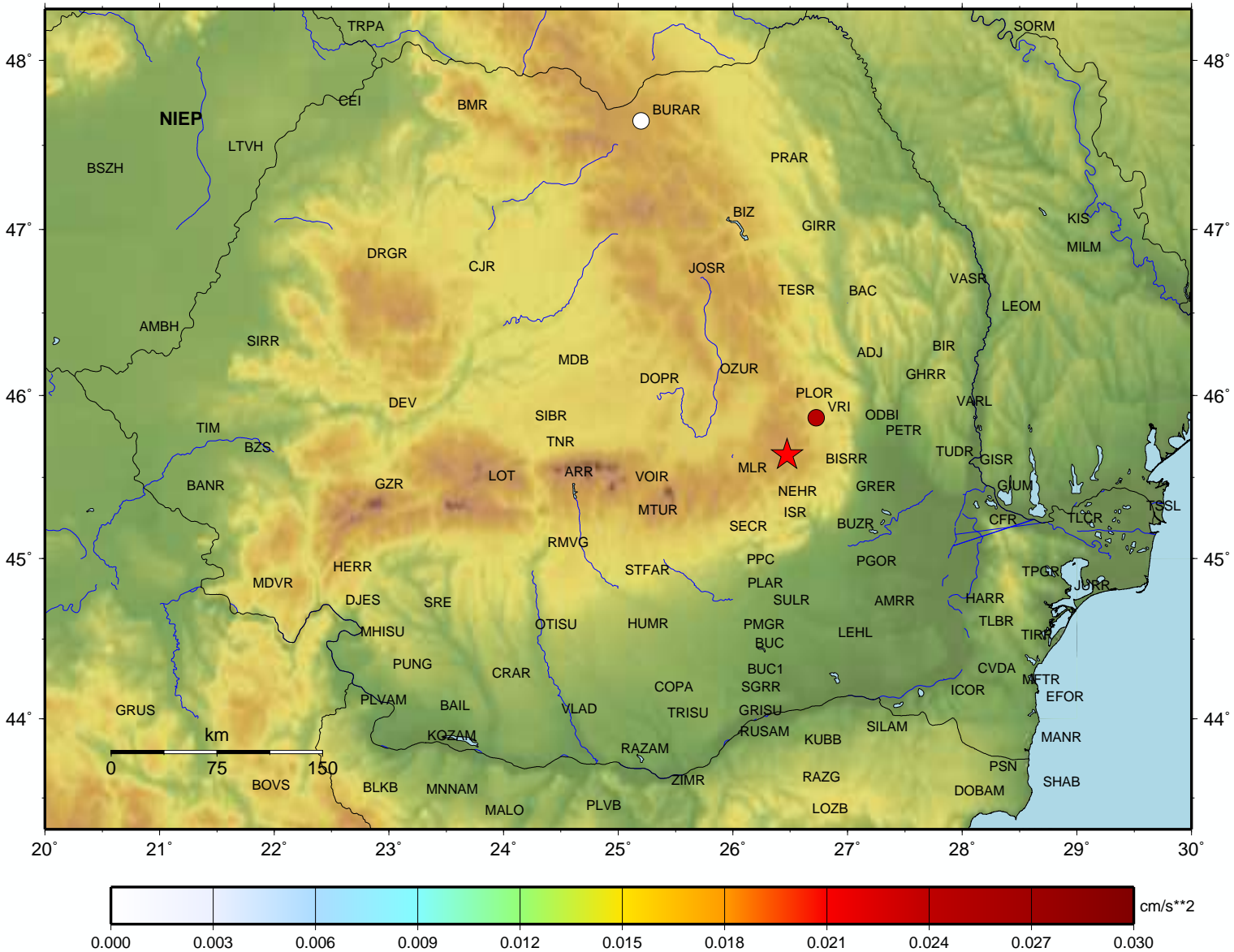
The largest accelerations recorded automatically by the seismic stations of "Instalatie de Interes National - Retea Seismica Nationala (IOSIN-RSN)"

Max. pga (cm/sec**2)		
VRI	HNE	0.02
BURAR	BHN	0.00

### Observed stations accelerations - Antelope platform (cm/sec\*\*2)

Maximum observed acceleration: VRI\_HNE -0.02

Sat Jul 17, 2021 17:15:40 GMT ML 3.6 N45.64 E26.47 Depth: 145.4km ID:17171540





### Observed stations velocities – Antelope platform (cm/sec)

Maximum observed velocity: PANC\_HHN 0.00

Sat Jul 17, 2021 17:15:40 GMT ML 3.6 N45.64 E26.47 Depth: 145.4km ID:17171540

