



National Institute for Earth Physics - Magurele

## Seismic report - manual

Event local time: Thu Apr 08,2021 22:54:49

Romania - Event 98195449 - Vrancea seismic zone

Thu Apr 8, 2021 19:54:49 GMT ML 3.8 N45.65 E26.55 Depth: 139.3km ID:98195449

NOTE: Accelerations, velocities and intensities are calculated automatically and are not revised by human operator. Their accuracy has not been evaluated.

# Seismicity of Romania - latest large intermediate earthquakes

Date	Time	Lon	Lat	Depth	Mw
28-Oct-2018	00:38:11	26.41	45.61	147.8	5.5
27-Dec-2016	23:20:55	26.60	45.71	96.9	5.6
23-Sep-2016	23:11:20	26.62	45.71	92.0	5.5
06-Oct-2013	01:37:21	26.58	45.67	135.1	5.2
25-Apr-2009	17:18:48	26.62	45.68	109.6	5.4
18-Jun-2005	15:16:41	26.66	45.72	153.7	5.2
14-May-2005	01:53:21	26.53	45.64	148.5	5.5
27-Oct-2004	20:34:36	26.63	45.84	105.4	6.0
06-Apr-2000	00:10:38	26.64	45.75	143.4	5.0
28-Apr-1999	08:47:56	26.27	45.49	151.1	5.3

Source: ROMPLUS Catalogue

## Romania – Event 98195449 – Vrancea seismic zone

Attenuation laws – GMPE::VS10 IPE::VS04\_msk

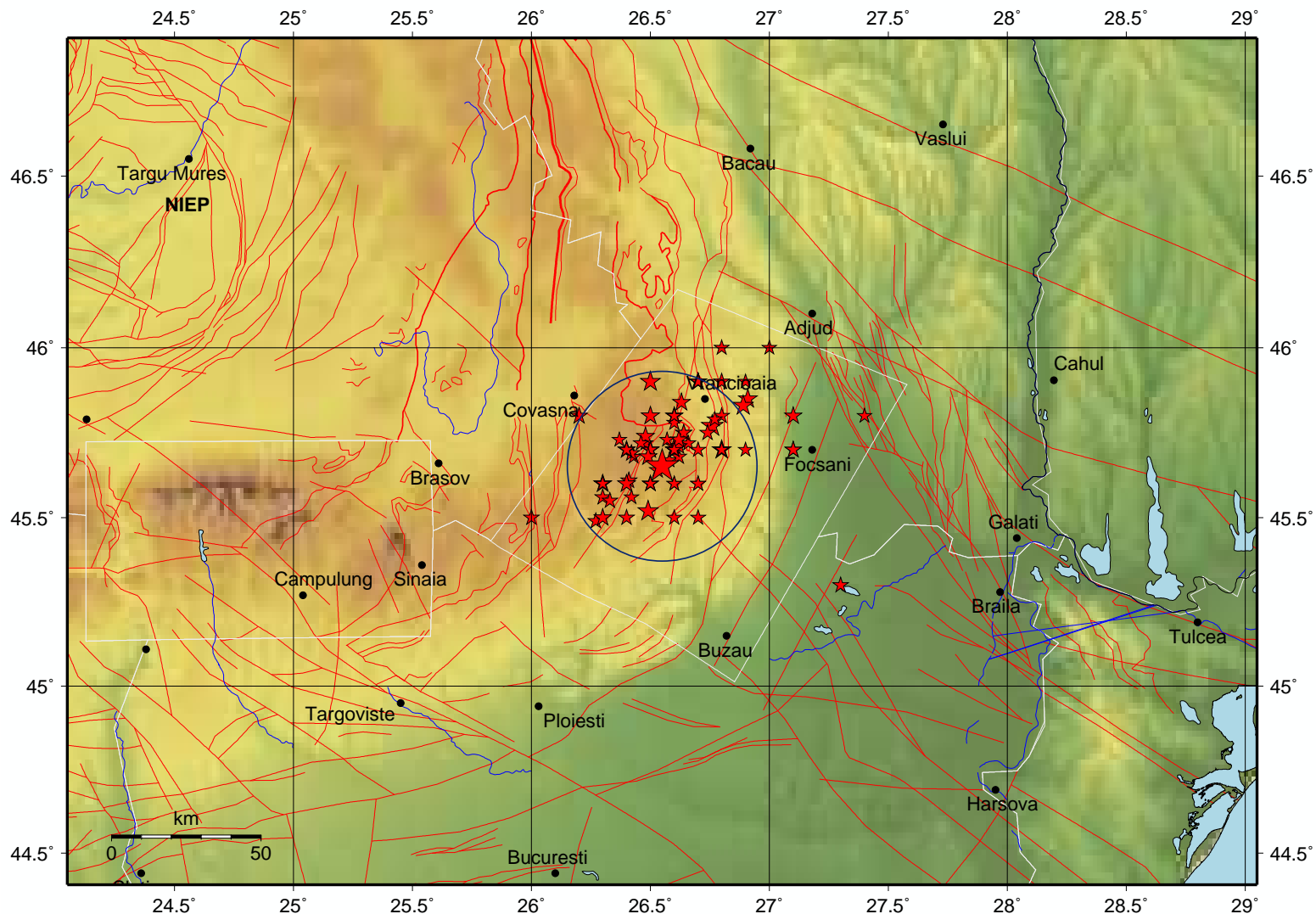
Max. grid values – pga: 1.18(cm/sec\*\*) pgv: 0.01(cm/sec) mi: 2.2

Thu Apr 8, 2021 19:54:49 GMT ML 3.8 N45.65 E26.55 Depth: 139.3km ID:98195449 Mw 3.6

Local time

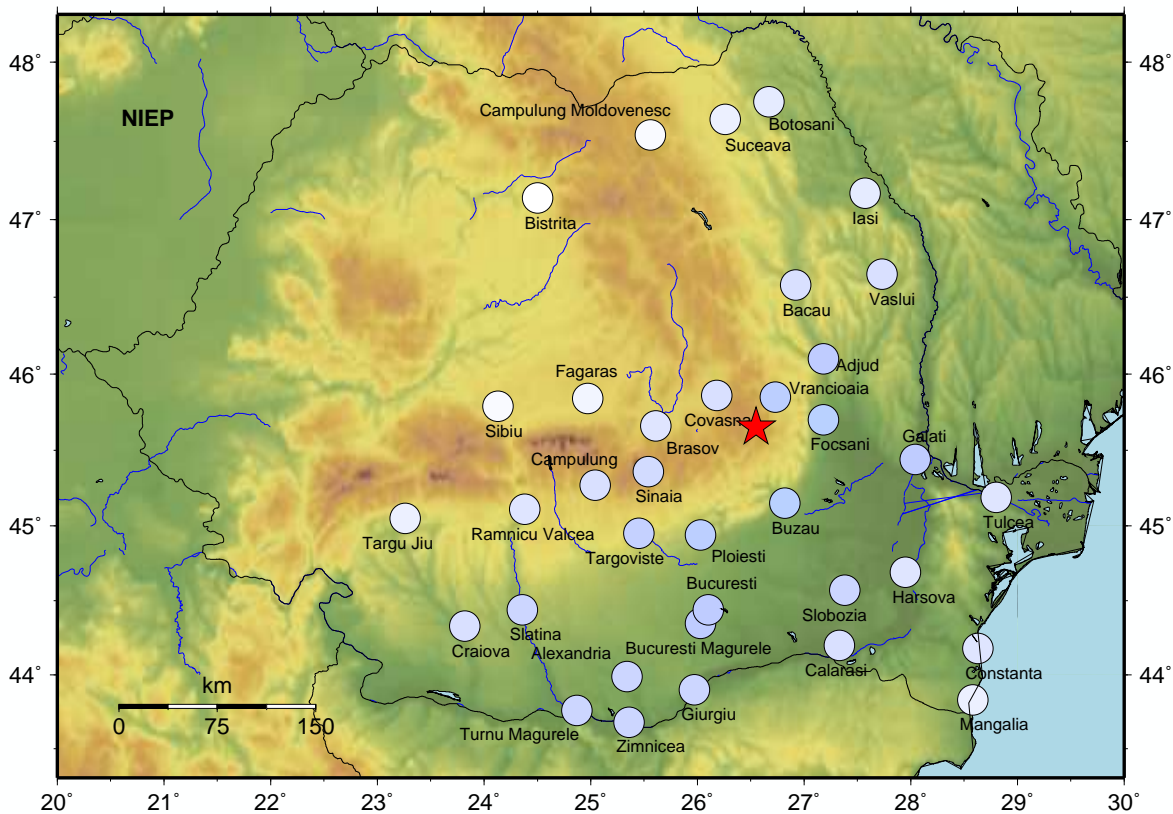
Thu Apr 08,2021 22:54:49

Fault lines ———



### Estimated intensities based on IPE::VS04\_msk attenuation law

Thu Apr 8, 2021 19:54:49 GMT ML 3.8 N45.65 E26.55 Depth: 139.3km ID:98195449



City	Distance(km)
Vrancea	26
Covasna	36
Focsani	49
Buzau	59
Adjud	69
Brasov	73
Sinaia	85
Ploiesti	89
Bacau	107
Targoviste	116
Galati	118
Fagaras	124
Campulung	125
Slobozia	136
Bucuresti	139
Vaslui	143
Bucuresti Magurele	150
Harsova	153
Calarasi	172
Ramnicu Valcea	180
Tulcea	183
Iasi	186
Sibiu	188
Giurgiu	200
Alexandria	208
Slatina	218
Suceava	222
Campulung M.	223
Bistrita	228
Constanta	231
Botosani	233
Zimnicea	238
Turnu Magurele	248
Mangalia	258
Craiova	260
Targu Jiu	266

PERCEIVED SHAKING	Not felt	Weak	Light	Moderate	Strong	Very strong	Severe	Violent	Extreme
POTENTIAL DAMAGE	none	none	none	Very light	Light	Moderate	Moderate/Heavy	Heavy	Very Heavy
INSTRUMENTAL INTENSITY	I	II-III	IV	V	VI	VII	VIII	IX	X+

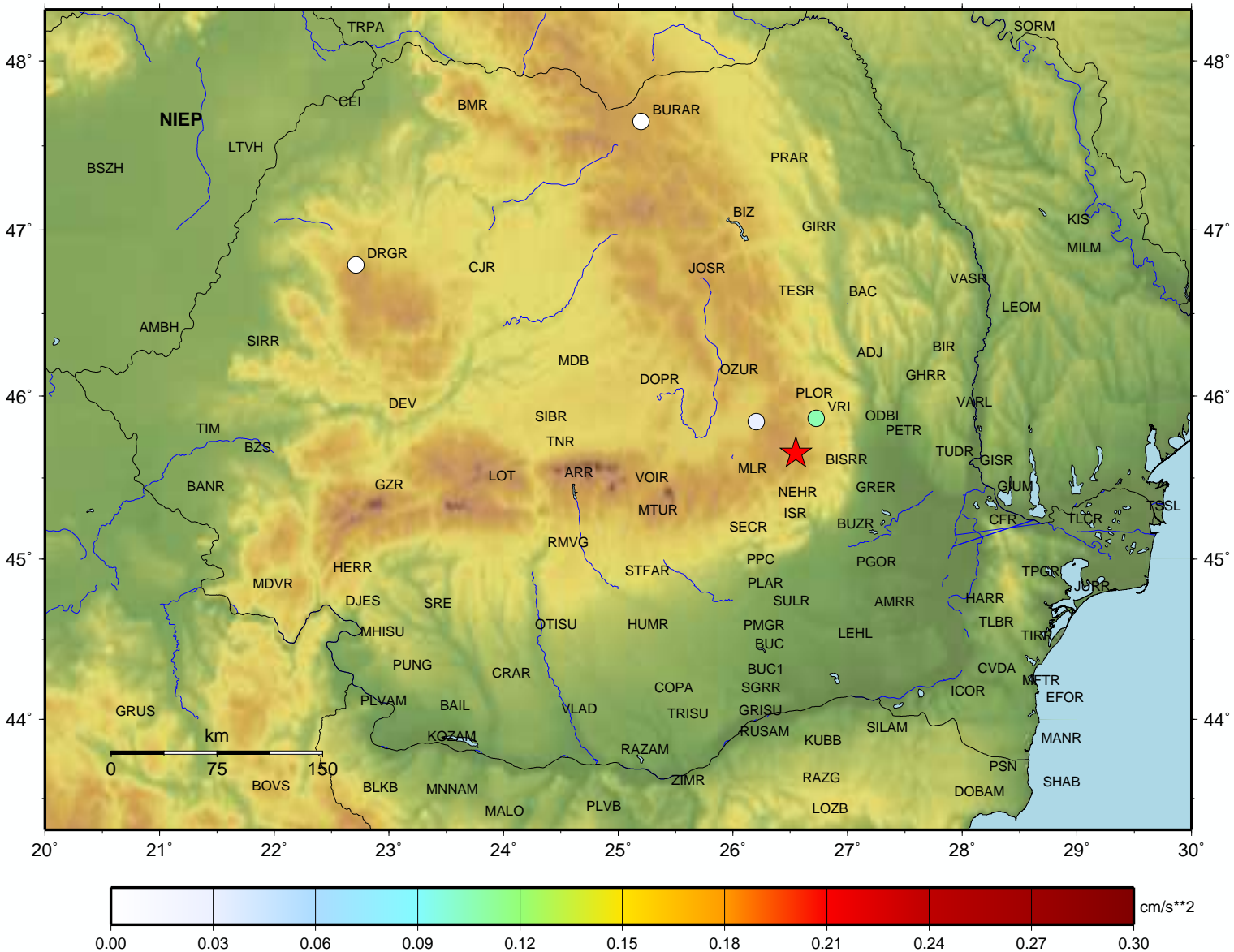
The largest accelerations recorded automatically by the seismic stations of "Instalatie de Interes National - Retea Seismica Nationala (IOSIN-RSN)"

Max. pga (cm/sec**2)		
VRI	HNE	0.11
COVR	HNN	0.03
DRGR	HNN	0.00
BURAR	BHN	0.00

### Observed stations accelerations – Antelope platform (cm/sec\*\*2)

Maximum observed acceleration: VRI\_HNE -0.11

Thu Apr 8, 2021 19:54:49 GMT ML 3.8 N45.65 E26.55 Depth: 139.3km ID:98195449



### Observed stations velocities – Antelope platform (cm/sec)

Maximum observed velocity: HUMR\_HHE 0.06

Thu Apr 8, 2021 19:54:49 GMT ML 3.8 N45.65 E26.55 Depth: 139.3km ID:98195449

