



National Institute for Earth Physics - Magurele

Seismic report - manual

Event local time: Fri Mar 17,2023 16:17:29

Romania - Event 17141729 - Oltenia seismic zone

Fri Mar 17, 2023 14:17:29 GMT ML 3.6 N45.13 E23.06 Depth: 12.6km ID:17141729

NOTE: Accelerations, velocities and intensities are calculated automatically and are not revised by human operator. Their accuracy has not been evaluated.

Seismicity of Romania - latest large crustal earthquakes

Date	Time	Lon	Lat	Depth	Mw
24-Apr-2020	22:04:18	27.47	45.89	22.6	4.6
22-Nov-2014	19:14:17	27.15	45.87	40.9	5.4
03-Oct-2004	09:02:04	28.92	45.21	3.7	4.7
02-Dec-1991	08:49:41	21.12	45.45	9.0	5.5
18-Jul-1991	11:56:31	22.35	44.90	12.0	5.6
12-Jul-1991	10:42:21	21.05	45.38	11.0	5.6
01-Apr-1988	07:15:44	27.70	47.90	17.0	4.2
19-Jul-1987	02:18:56	27.79	45.55	15.0	4.4
13-Nov-1981	09:07:08	29.00	45.17	15.0	5.1
11-Sep-1980	23:24:25	28.03	45.32	20.4	4.2

Source: ROMPLUS Catalogue

Romania – Event 17141729 – Oltenia seismic zone

Attenuation laws – GMPE::BJF97 IPE::TA09_mmi

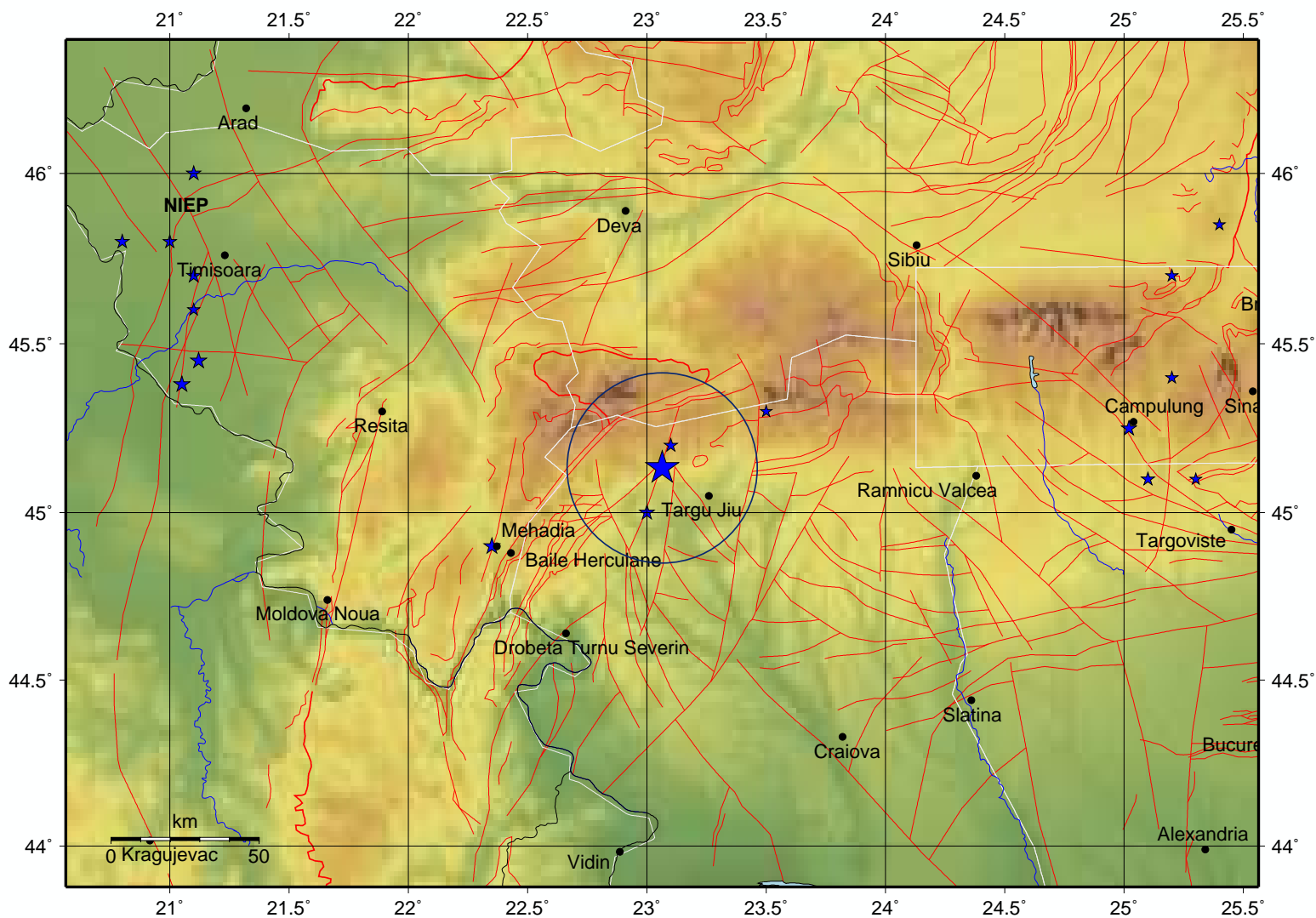
Max. grid values – pga: 38.95(cm/sec**) pgv: 0.14(cm/sec) mi: 3.7

Fri Mar 17, 2023 14:17:29 GMT ML 3.6 N45.13 E23.06 Depth: 12.6km ID:17141729 **Mw 3.0**

Local time

Fri Mar 17, 2023 16:17:29

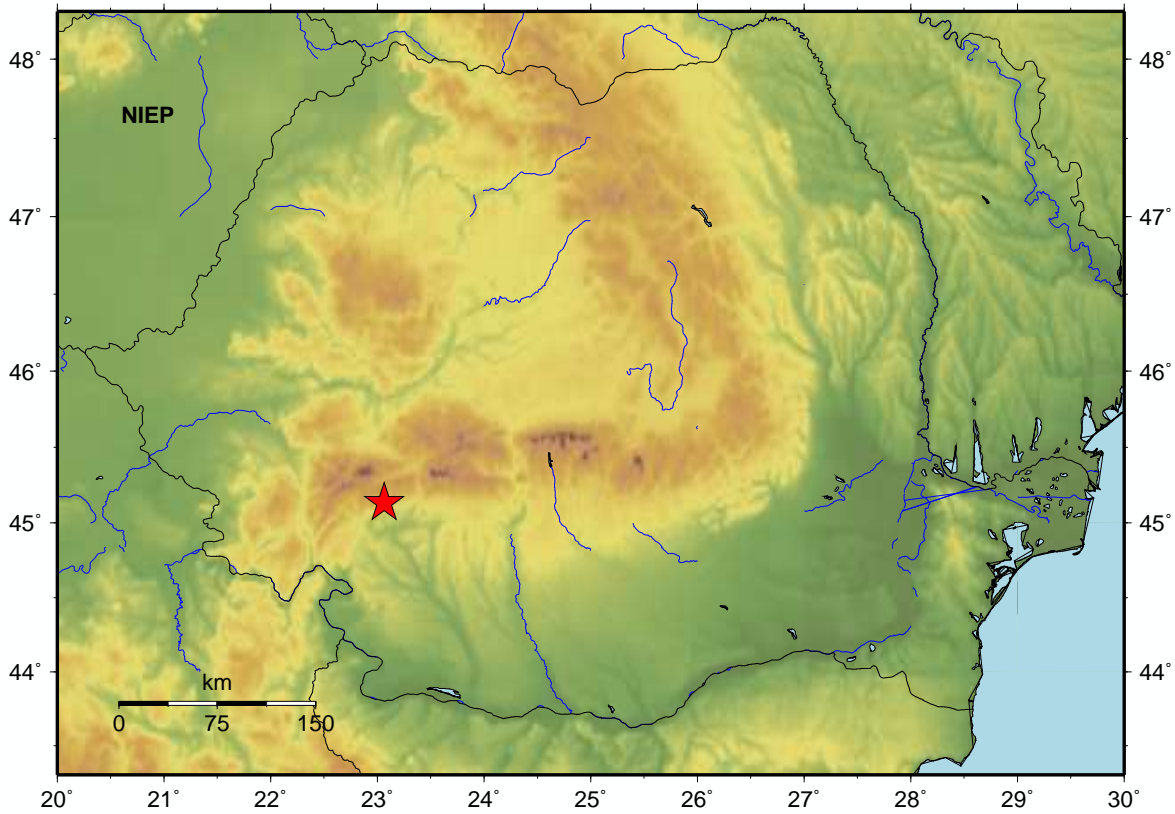
Fault lines



Estimated intensities based on IPE::TA09_mmi attenuation law

Fri Mar 17, 2023 14:17:29 GMT ML 3.6 N45.13 E23.06 Depth: 12.6km ID:17141729

City Distance(km)



PERCEIVED SHAKING	Not felt	Weak	Light	Moderate	Strong	Very strong	Severe	Violent	Extreme
POTENTIAL DAMAGE	none	none	none	Very light	Light	Moderate	Moderate/Heavy	Heavy	Very Heavy
INSTRUMENTAL INTENSITY	I	II-III	IV	V	VI	VII	VIII	IX	X+

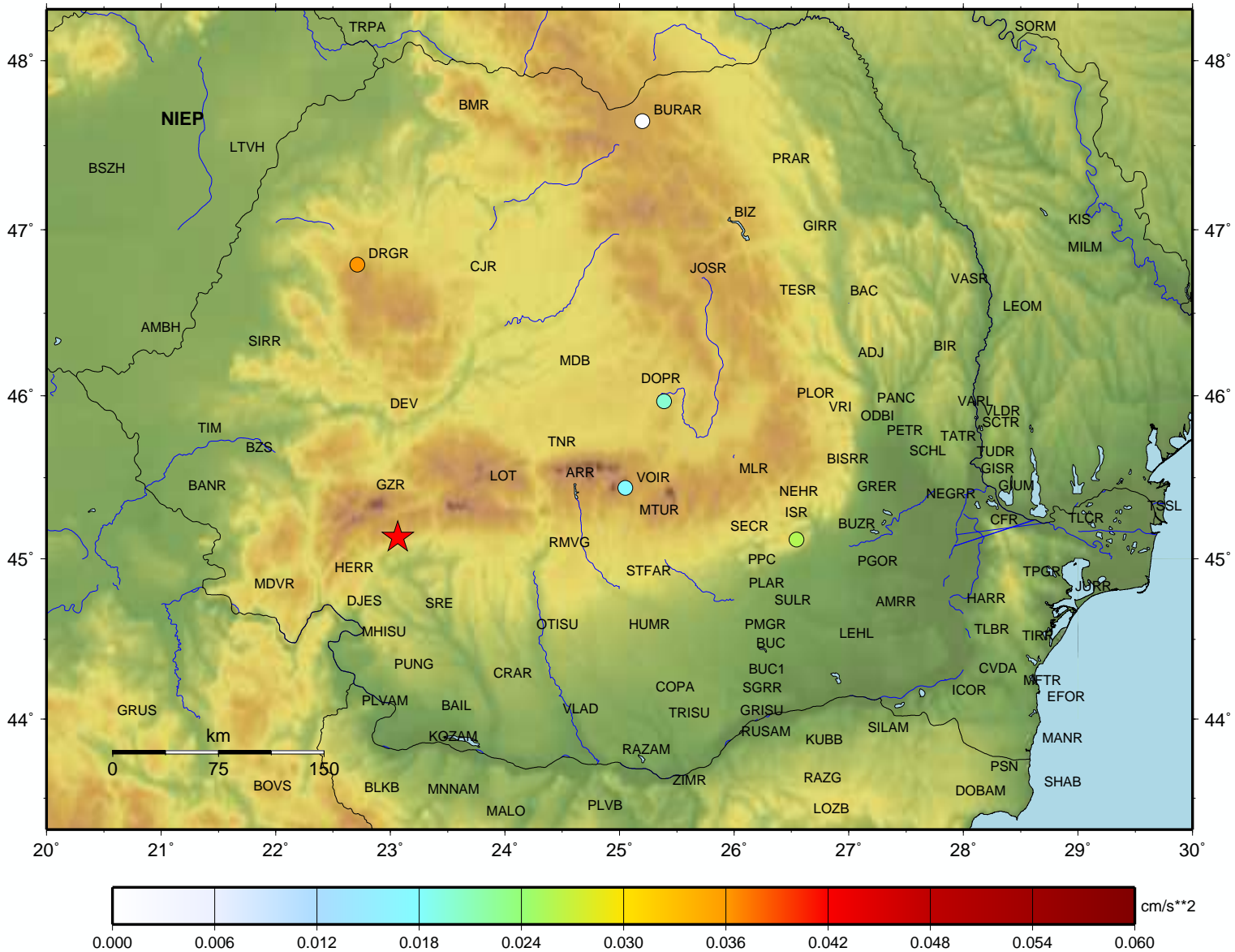
The largest accelerations recorded automatically by the seismic stations of "Instalatie de Interes National- Retea Seismica Nationala (IOSIN-RSN)"

Max. pga (cm/sec**2)		
DRGR	HNE	0.04
ISR	HNN	0.03
DOPR	HNN	0.02
VOIR	HNN	0.02

Observed stations accelerations – Antelope platform (cm/sec**2)

Maximum observed acceleration: DRGR_HNE 0.04

Fri Mar 17, 2023 14:17:29 GMT ML 3.6 N45.13 E23.06 Depth: 12.6km ID:17141729



The largest velocities recorded automatically by the seismic stations of "Instalatie de Interes National- Retea Seismica Nationala (IOSIN-RSN)"

Max. pgv (cm/sec)

LELR	HHE	0.550	DEV	HHE	0.009
TCAR	EHN	0.536	MDB	HHN	0.008
DBRR	HHN	0.181	SURR	HHN	0.005
PTSR	HHN	0.155	BAIL	HHN	0.005
INXR	EHE	0.096	CRAR	HHE	0.004
BVPR	EHN	0.079	ODSR	HHN	0.004
SRE	HHE	0.036	CJR	HHE	0.004
GZR	HHE	0.032	VLAD	HHE	0.003
RMGR	HHE	0.015	MARR	HHN	0.003
HERR	HHN	0.010	STFAR	HHE	0.002

Observed stations velocities – Antelope platform (cm/sec)

Maximum observed velocity: LELR_HHE 0.55

Fri Mar 17, 2023 14:17:29 GMT ML 3.6 N45.13 E23.06 Depth: 12.6km ID:17141729

